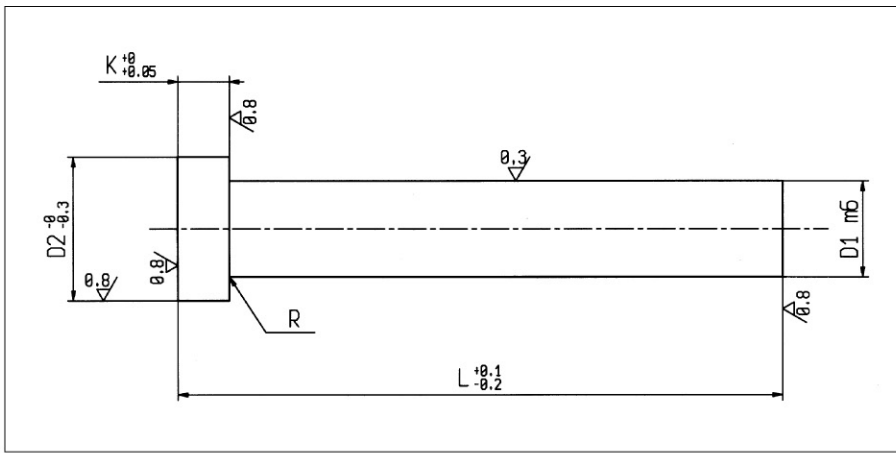
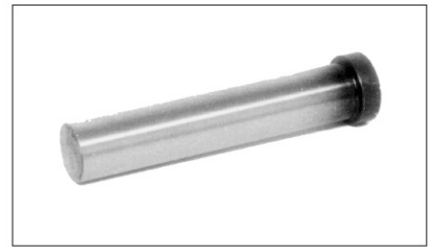


# Punzoni con testa cilindrica forgiata / Moulded cylindrical head punches



# EP-2



**Acciaio/Steel:** HWS 12% cromo - UNI X 205 Cr 12 KU (DIN 17350 - x 210 Cr 12 - W Nr 1.2080)

HSS - UNI HS 6-5-2 (W Nr ~ 1.3554 LW - 1.3343)

**Durezza/Hardness:** Gambo/Stem: HRC 62-64 ± 1 - Testa/Head: HRC 45 ± 5

**Esecuzione:** La testa viene forgiata a caldo, dopo trattamento termico e rinvenimento, il gambo viene finemente rettificato e lappato. La testa rettificata in tutte le sue superfici si ottiene la perfetta coassialità fra il gambo del punzone e la sua testa.

*Execution:* The stem is accurately grinded and lapped after thermal processing, the head is shaped while hot and retaken.

The head is grinded in all its surfaced, and the perfect alignment between the punch head and its stem is obtained.

D1	D2	K	L	
			71	100
2	4	3	—	—
3	5	3	—	—
4	6	3	—	—
5	7	5	—	—
6	9	5	—	—
8	11	5	—	—
10	13	5	—	—
13	16	5	—	—
16	19	5	—	—
20	24	5	—	—
25	29	5	—	—

Esempio di ordinativo: D1 x L